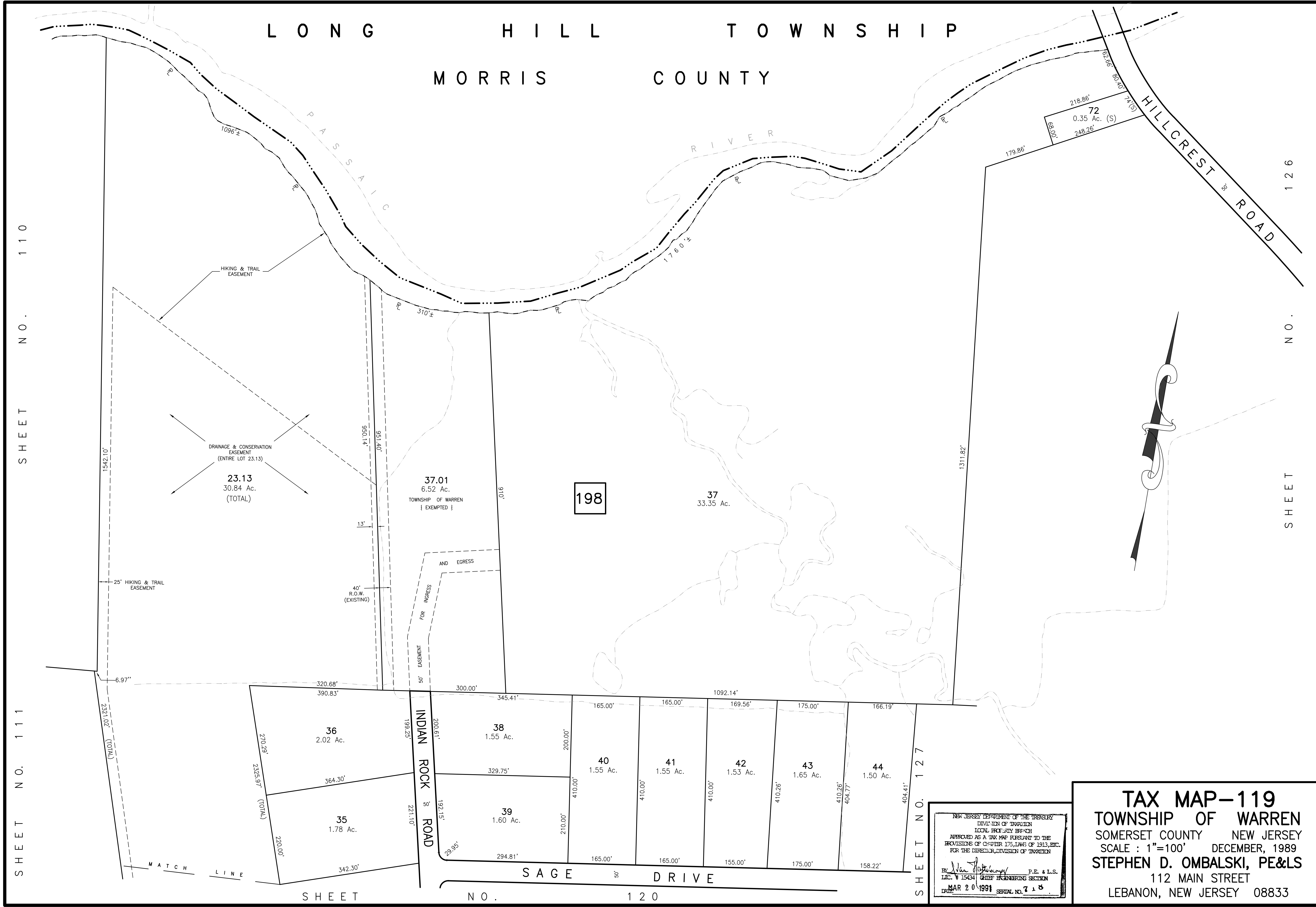


LONG HILL TOWNSHIP
MORRIS COUNTY



SHEET NO. 110
SHEET NO. 111

SHEET NO. 126
SHEET NO. 127

NEW JERSEY DEPARTMENT OF THE TREASURY
DIVISION OF TAXATION
LOCAL PROPERTY TAX
APPROVED AS A TAX MAP PURSUANT TO THE
PROVISIONS OF CHAPTER 175, LAWS OF 1913, ETC.
FOR THE DIRECTOR, DIVISION OF TAXATION

By: *Stephen D. Ombalski* P.E. & L.S.
LIC. # 15434 CHIEF ENGINEERING SECTION
DATE: MAR 20 1991 SERIAL NO. 718

TAX MAP-119
TOWNSHIP OF WARREN
SOMERSET COUNTY NEW JERSEY
SCALE: 1"=100' DECEMBER, 1989
STEPHEN D. OMBALSKI, PE&LS
112 MAIN STREET
LEBANON, NEW JERSEY 08833