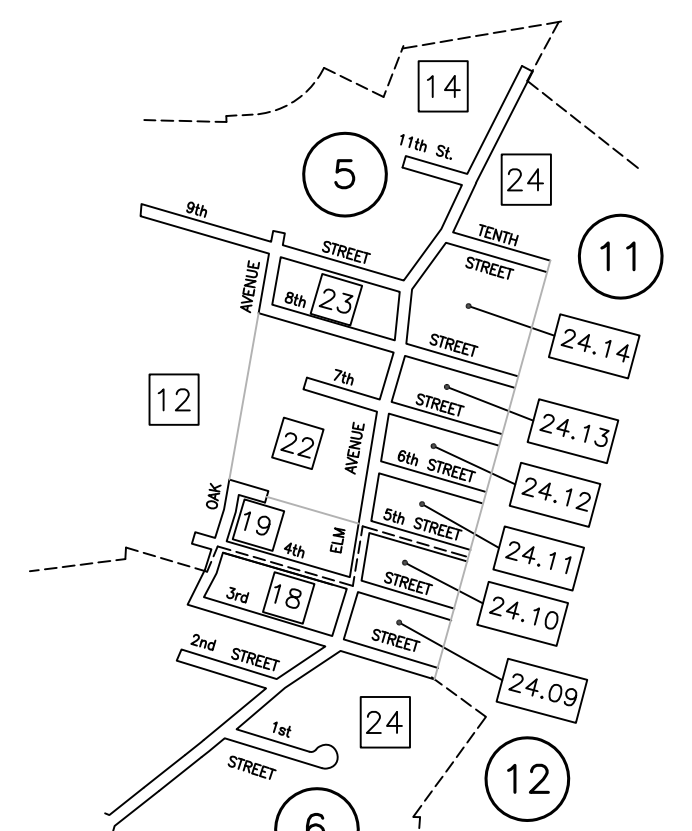
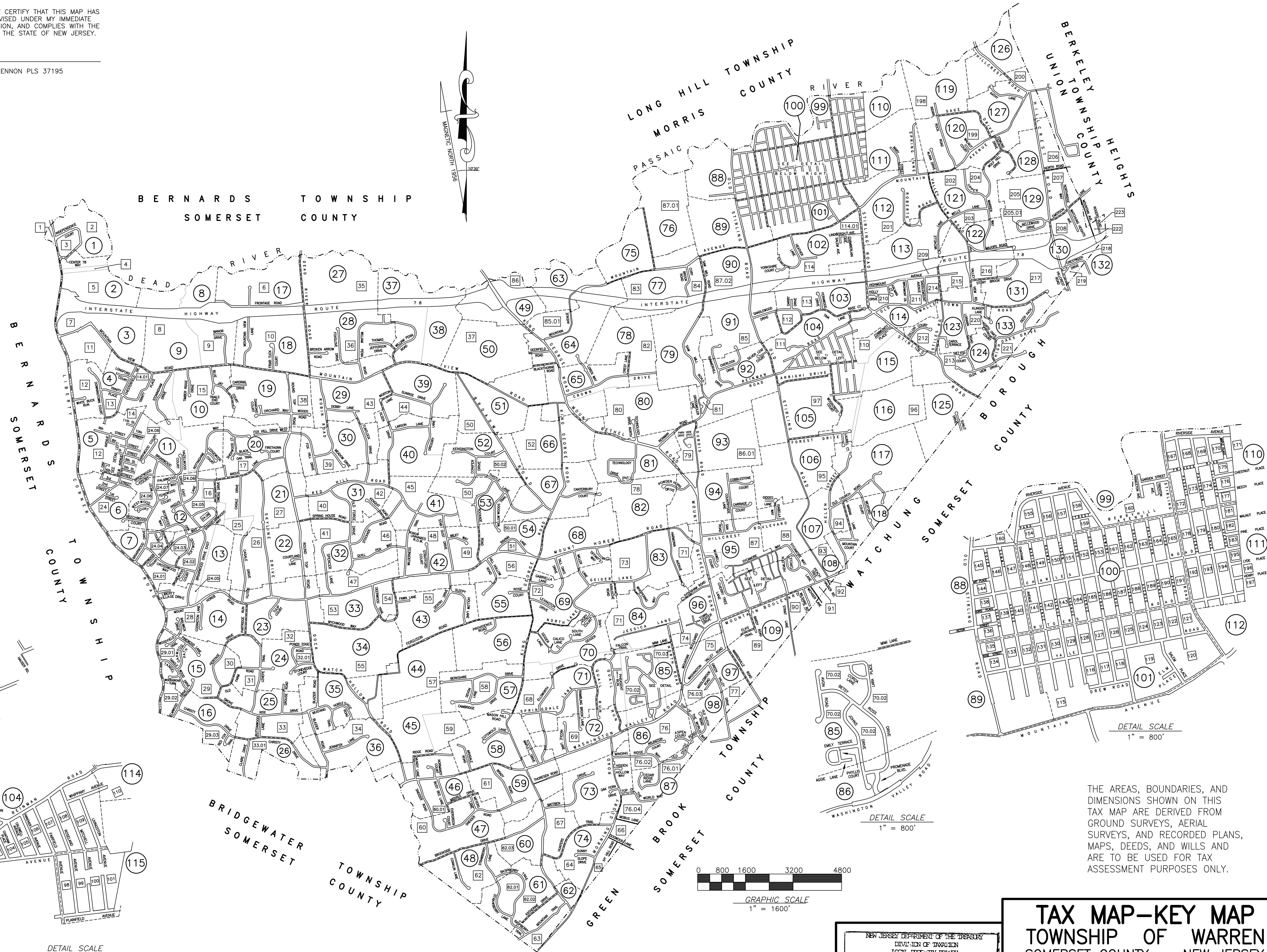


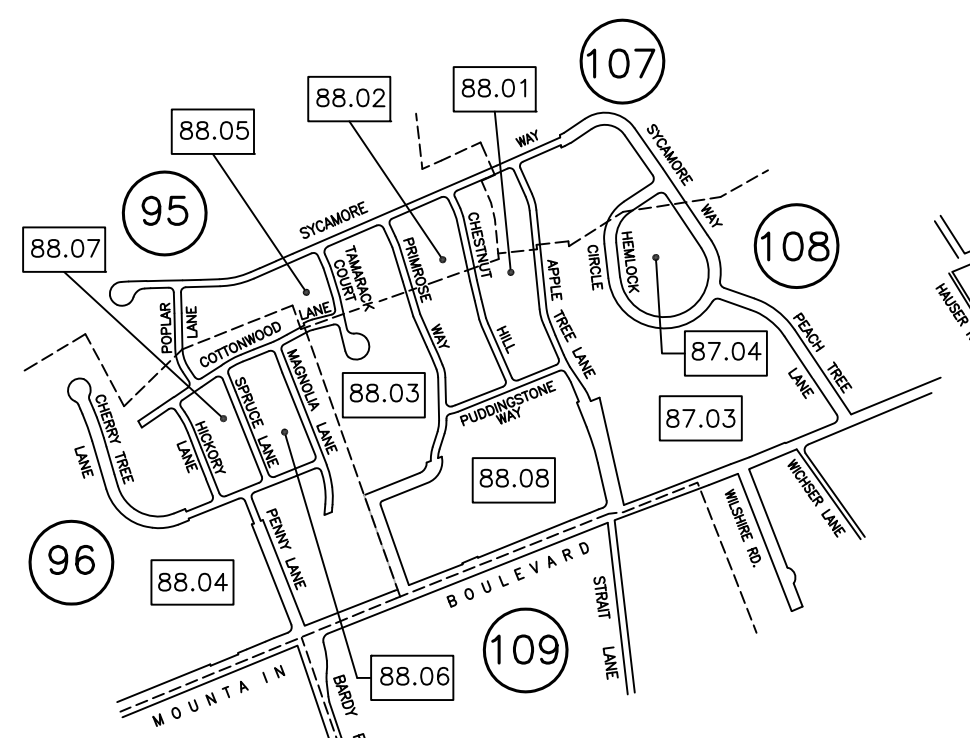
DATE	REVISIONS	LIC. NO.
1-2-92	JOHN S. LUTSKY	18598
1-22-92	JOHN S. LUTSKY	18598
2-22-93	JOHN S. LUTSKY	18598
12-3-93	JOHN S. LUTSKY	18598
2-28-94	JOHN S. LUTSKY	18598
1-5-95	LEO J. ECKMANN	12641
1-12-96	LEO J. ECKMANN	12641
4-1-97	LEO J. ECKMANN	12641
3-2-98	LEO J. ECKMANN	12641
4-7-99	LEO J. ECKMANN	12641
5-16-00	EUGENE DISTEFANO	20833
8-1-03	STEVEN D. PARENT	36269
4-30-05	STEVEN D. PARENT	36269
6-13-06	STEVEN D. PARENT	36269
3-7-07	STEVEN D. PARENT	36269
9-22-08	STEVEN D. PARENT	36269
1-30-09	STEVEN D. PARENT	36269
3-17-10	STEVEN D. PARENT	36269
1-4-13	KENNY KENNON	37195
1-28-14	KENNY KENNON	37195
1-1-15	KENNY KENNON	37195
1-26-16	KENNY KENNON	37195
1-27-17	KENNY KENNON	37195
3-26-18	KENNY KENNON	37195
1-2-19	KENNY KENNON	37195
1-2-2020	KENNY KENNON	37195

I HEREBY CERTIFY THAT THIS MAP HAS BEEN REVISED UNDER MY IMMEDIATE SUPERVISION, AND COMPLIES WITH THE LAWS OF THE STATE OF NEW JERSEY.

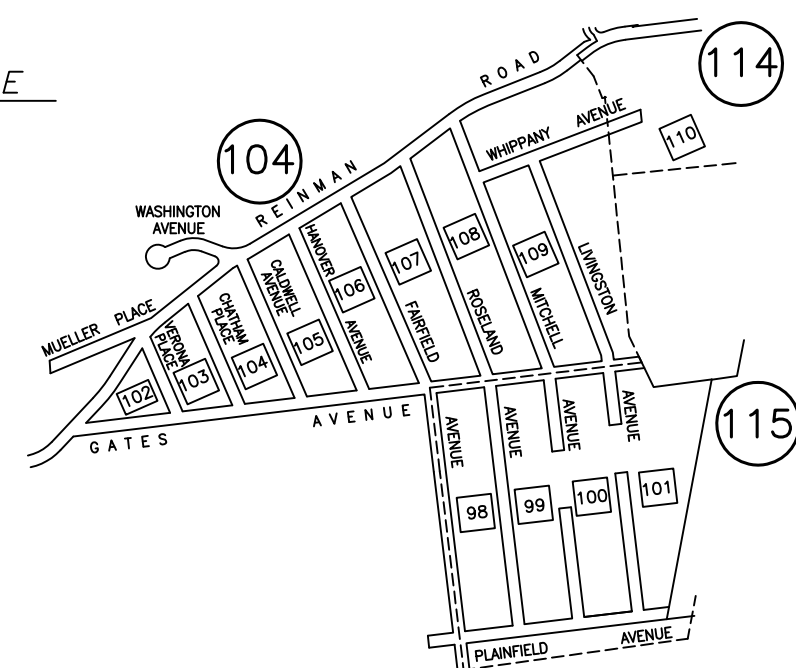
KENNY KENNON PLS 37195



DETAIL SCALE
1" = 800'



DETAIL SCALE
1" = 800'



DETAIL SCALE
1" = 800'

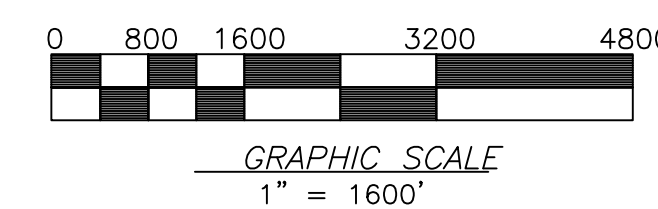
LEGEND

- ② SHEET NUMBER
- SHEET LIMIT
- ① BLOCK NUMBER
- BLOCK LIMIT

THIS TAX MAP IS BASED ON MAPS PREPARED BY J. D. CRAIG, N.J.L.S. DATED 1955-56, TO SHOW CONDITIONS AS OF DECEMBER 31, 1989. THIS TAX MAP SUPERCEDES THE TAX MAP APPROVED JULY 8, 1958.

I HEREBY CERTIFY THAT THIS MAP HAS BEEN REDRAFTED AND REVISED UNDER MY IMMEDIATE SUPERVISION, AND COMPLIES WITH THE LAWS OF THE STATE OF NEW JERSEY.

Stephen D. Ombalski 2/8/18
STEPHEN D. OMBALSKI NJ PE & LS 17884



DETAIL SCALE
1" = 800'

THE AREAS, BOUNDARIES, AND DIMENSIONS SHOWN ON THIS TAX MAP ARE DERIVED FROM GROUND SURVEYS, AERIAL SURVEYS, AND RECORDED PLANS, MAPS, DEEDS, AND WILLS AND ARE TO BE USED FOR TAX ASSESSMENT PURPOSES ONLY.

NEW JERSEY DEPARTMENT OF THE TREASURY
DIVISION OF TAXATION
LOCAL OFFICE BRANCH
APPROVED AS A TAX MAP PURSUANT TO THE PROVISIONS OF CHAPTER 175, LAWS OF 1913, ETC. FOR THE DIRECTOR, DIVISION OF TAXATION
Stephen D. Ombalski P.E. & L.S.
LIC. # 15434 CHIEF ENGINEERING SECTION
DATE: MAR 20 1991 SERIAL NO. 7 1 8

TAX MAP-KEY MAP
TOWNSHIP OF WARREN
SOMERSET COUNTY NEW JERSEY
SCALE : 1"=1600' DECEMBER, 1989
STEPHEN D. OMBALSKI, PE&LS
112 MAIN STREET
LEBANON, NEW JERSEY 08833
TO SHOW CONDITIONS AS OF DECEMBER 31, 2018